

# Journal of Drug Discovery and Therapeutics

Available Online at [www.jddt.in](http://www.jddt.in)

CODEN: - JDDTBP (Source: - American Chemical Society)

Volume 12, Issue 02; 2024, 97-113

---

## Evaluation of *Cordia dichotoma* Gum as a Potent Excipient for Formulation of Film

Vaibhav Mangalrao Darvhekar\*, A. V. Chandewar<sup>1</sup>

\*Department of Pharmacognosy, P. Wadhvani College of Pharmacy, Yavatmal, Maharashtra, India.

<sup>1</sup> Principal, P. Wadhvani College of Pharmacy, Yavatmal, Maharashtra, India.

---

Received: 10-03-2024 / Revised: 27-03-2024 / Accepted: 29-04-2024

Corresponding author: Vaibhav Mangalrao Darvhekar

Conflict of interest: No conflict of interest.

---

### Abstract:

Films were prepared (viz. CDF1, CDF2, CDF3, CDF4, CDF5) using 5 parts of 10% w/w of mucilage of gum of *Cordia dichotoma* with different proportions of plasticizers methyl paraben, glycerine. The films were casted on mercury plate. Films prepared with different proportion of gum and 0.2 % w/v methyl paraben, 2.5% w/v of glycerine showed satisfactory drying after 24 h. They were evaluated for qualitative phytochemical analysis followed by mechanical properties like water uptake, tensile strength, folding endurance, and water vapor transmission rate and stability studies also done for plane film. Further the gum was evaluated for release parameter with model drug diclofenac sodium (0.5 % w/w) with same composition of methyl paraben and glycerine.

Study found that the CDF3 film shows the best result among other batches of *Cordia dichotoma*.

**Key word:** *Cordia dichotoma*, natural gum, film, sustained release drug delivery systems, diclofenac sodium.

---

### Introduction

Polymers are widely used in medicinal products, from complex formulations to biopharmaceuticals in prescription drug delivery systems. Pharmaceutical coating materials are characterized by mechanical properties [1-2], permeability [3-4] and water vapor transport [5]. The coating process and nature of the dosage form did not affect the properties of the free film [6]. Natural polymers are of interest to their use in drug delivery due to their presence, compatibility and degradation in natural and physiological conditions (Item) [7]. It is widely used in natural resins, varnishes, sealants, bonding

medium, waterproofing and so on. uses of natural products such as rosin (pinaceae), dammar resin, sandalwood resin, frankincense, and guaiac resin were evaluated.

This paper deals with the evaluation of a natural gum for its use in preparing films for application as drug delivery systems and coating agents. There are several reports about the successful use of natural gums in various pharmaceutical preparations. The gum in the present study is an extract from the berries of *Cordia dichotoma* (Lasuda).

## Material and method

Ripe cordia fruits were collected from local habitat and got authenticate by botanist from agricultural college. methyl paraben, glycerine e and other solvents were purchased from S.D. Fine Chemicals.

### Extraction of gums from the fruits of *Cordia dichotoma*

The gum was isolated from Cordia dichotoma fruit using solvent precipitation method [8]. Ripe fruits of Cordia dichotoma were extracted with water (1:2) by stirring for 3h. The viscous solution obtained was filtered through Muslin cloth. Ethanol (95%) was added with continuous stirring to the viscous solution obtained in the ratio 1:1 to precipitate out gum present in the fruit [9]. The precipitated gum was transferred to an evaporating dish and treated consecutively with ethanol (95%) to make it free from impurities. The gum obtained was dried in oven at temperature 40-45°C<sup>[10]</sup>. The dried gum was then size reduced by passing through 60 # sieve and stored in airtight container.

### Qualitative Phytochemical Analysis

The isolated gum was subjected to various phytochemical tests [11-14] as Test for Alkaloids as Dragendorff's test, Mayer's test, Hager's test, Wagner's test, Test for carbohydrates *Molisch test*, Fehlings test (detection of reducing sugars), Test for proteins and amino acids as Biuret's tests, Million's test, Ninhydrin test, Xanthoprotein test, Tests for Steroids such as Salkowski Reaction, Liebermann-Burchard Reaction, Libermann's reaction, Test for Tannins and Phenolic compounds *Test for flavanoids as Ammonia test*, *Shinoda's/Paw test*, *Test for saponins Foam test*, *Liebermann-Burchard test*, Test for Gums and Mucilages, Test for sterols and or triterpenes.

The extracts were refluxed with alcoholic potassium hydroxide until the saponification was complete. The saponification mixture was diluted with distilled water and extracted with diethyl ether. The ethereal extract was evaporated and the unsaponifiable matter was subjected to following tests *Liebermann-Burchard test*, Salkowski's reaction, Hesses reaction, Hersch's Sohn's reaction, Test for Glycosides *Borntrager's test*, *Keller-Killiani test*, Legal test. [15-17]

### Physical parameters of extracted gums

#### Organoleptic Evaluation:

The isolated mucilage was subjected for various organoleptic evaluations which included evaluation of colour, odour, shape, taste and special features like touch and texture [18-20]. The majority of information on the identification, purity and quality of the material can be drawn from these observations.

#### Bulk density

Loose Bulk Density (LBD) and Tapped Bulk Density (TBD) were determined. A quantity of 2 g of powder from each formula, previously lightly shaken to break any agglomerates formed, was introduced into a 10 ml measuring cylinder. After the initial volume was observed, the cylinder was allowed to fall under its own weight onto a hard surface from the height of 2.5 cm at 2 second intervals. The tapping was continued until no further change in volume was noted. LBD and TBD were calculated using the following formula [21-22].

$$\text{LBD} = \text{Weight of the powder} / \text{Volume of the packing}$$

$$\text{TBD} = \text{Weight of the powder} / \text{Tapped volume of the packing}$$

### Compressibility Index

The compressibility of the granules was determined by Carr's Compressibility Index.

$$\text{Carr's compressibility index (\%)} = [(TBD-LBD) \times 100] / TBD$$

Or it can be expressed as Carr's Index relates the poured density of the material to the tapped density and was calculated by using the following relationship: [21-22].

$$\text{Carr's Index} = \frac{\text{Tapped density} - \text{Poured density} \times 100}{\text{Tapped density}}$$

**Table 1: Relationship between % compressibility and flowability**

| Percent compressibility | Type of flow   |
|-------------------------|----------------|
| 5-15                    | Excellent      |
| 12-16                   | Good           |
| 18-21                   | Fare-passable  |
| 23-25                   | Poor           |
| 33-38                   | Very poor      |
| >40                     | Extremely poor |

### Hausner's ratio

It is the ratio of tapped density to bulk density [22].

$$\text{Hausner's ratio} = \frac{\text{Tapped density}}{\text{bulk density}}$$

**Table 2: Values of Hausner ratio and comment**

| Values           | Comment                         |
|------------------|---------------------------------|
| Less than 1.25   | Good flow                       |
| Greater than 1.5 | Poor flow                       |
| Between 1.25-1.5 | Added glidant normally improves |

### Angle of Repose ( $\theta$ )

This is the maximum angle possible between the surface of a pile of powder or granules and the horizontal plane.

The powders were allowed to flow through the funnel fixed to a stand at definite height (h). The angle of repose was then calculated by measuring the height and radius of the heap of granules formed. [21,22].

$$\begin{aligned} \tan \theta &= h/r \\ \theta &= \tan^{-1} (h/r) \end{aligned}$$

Where,  $\theta$  = angle of repose  
h = height of the heap  
r = radius of the heap

**Table 3: The relationship between Angle of repose and powder flow**

| Angle of repose | Powder flow |
|-----------------|-------------|
| < 25            | Excellent   |
| 25-30           | Good        |
| 30-40           | Passable    |
| > 40            | Very poor   |

The lower the angle of repose, the better the flow properties, when granules are placed in the hopper & allowed to slide down into the die for compression. It forms a pile. The angle of

repose may be calculated by measuring the height (h) of the pile and the radius of the base (r)

with ruler. The angle of repose shows in between 30-40° which is considered as passable flow of granules.

### Loss on drying

10 grams of extracted gums was heated in a hot air oven (GallenKamp, England) at 105 °C. Loss on drying (LOD) was the difference between the initial weight and the final weight of the sample expressed as a percentage [23,24].

$\% \text{LOD} = \frac{\text{initial weight} - \text{final weight}}{\text{initial weight}} \times 100$

### Solubility test

A 1.0 g of powdered gum was weighed and suspended in the respective solvents and was agitated for 24 h over a magnetic plate. A 1.0 ml from the supernatant was filtered and dried at 50° C. The gain in weight of previously tarred porcelain was taken as the amount of solute in the filtrate and this was used to calculate the solubility of the substance in 100 ml of the solvent. [25,26].

### pH

The pH of 1% suspension was determined using digital pH meter 3310 (Genway) at 25°C. [27].

### Viscosity

Rheological studies of dried mucilage were carried out using concentration (1% w/v) prepared in distilled water. The viscosities were measured using an Oswald's viscometer [28].

### Swelling index:

Swelling index of mucilage was determined by accurately weighed 1 g of mucilage powder was transferred into a 25ml glass Stoppard measuring cylinder. The initial bulk volume was noted. Then 25ml of water was added and mixture was shaken thoroughly every 10 min for 1 h. It was then allowed to stand for 3h at room temperature. Then the volume occupied by mucilage, was measured. The same procedure was repeated thrice and the mean value was calculated. Swelling index (SI) is expressed as a percentage and calculated according to the following equation [29].

$$\text{Swelling index (SI)} = \frac{V_2 - V_1}{V_1} \times 100$$

Where:  $V_1$  is initial volume of powder before hydration.

$V_2$  is volume of swollen powder after (3 hours) hydration.

### Ash values:

Ash values such as total ash, acid insoluble ash and water soluble ash were determined according to Indian Pharmacopoeia. The following procedures were used for determination of ash values [30].

#### a) Total Ash:

About 3 g of sample was accurately weighed and taken in a silica crucible, which was previously ignited and weighed. The powder was spread as a fine, even layer on the bottom of the crucible. The crucible was incinerated gradually by increasing temperature to make it dull red hot until free from carbon. The crucible was cooled and weighed. The procedure was repeated to get constant weight. The percentage of total ash was calculated with reference to air dried sample. [31]

b) **Acid Insoluble Ash:** The ash obtained as described above was boiled with 25ml of 2N HCL for five minutes. The insoluble ash was collected on an ash less filter paper and washed with hot water. The insoluble ash was transferred into a silica crucible, ignited and weighed. The procedure was repeated to get a constant weight. The percentage of acid insoluble ash was calculated with reference to the air-dried sample. [32]

### FTIR analysis

Pure drug sample, extracted mucilage and the physical mixture of drug with excipient in the ratio 1:1 were subjected to IR spectral studies using FTIR spectrophotometer [33]. A physical mixture of drug and isolated mucilage was mixed with desirable quantity of potassium bromide. 100 mg of this mixture was compressed to form a transparent pellet using hydraulic press at 15 tons pressure. It was scanned from 4000-400  $\text{cm}^{-1}$  in a FTIR – 8400 Shimadzu, JAPAN [34]. The individual spectra of the drug and mucilage were performed.

### **Film casting evaluations for the extracted gum**

The films were prepared on the mercury substrate by solvent casting method [35] with extracted *Cordia dichotoma* gum. The plasticizer, glycerine, was added to 5 ml of distilled water and kept for stirring on a magnetic stirrer. To this solution, the weighed quantity of polymer was added and stirred till it gets dissolved completely. Then the weighed quantity of excipients like the methyl paraben was then added to the solution. In case of air entrapment, the air bubbles were removed by sonication (Oscar sonicator). The homogenous solution was then casted on a petri plate and dried at 40°C in hot air oven for 20 h [35].

### **Evaluation of Mechanical properties of film**

#### **Thickness of the Film**

The thickness of films was measured with the help of micrometer screw gauge at different strategic locations like four corners and centre of the each film. Mean SD is calculated. The standard range for film thickness should not be less than 5 %. This is essential to assure uniformity in the thickness of the film [35-36].

#### **Folding Endurance**

It is measured manually for the prepared film. A film was repeatedly folded at 180° at the same place till it breaks. This test was performed on three films of each formulation and mean  $\pm$ SD was calculated [35-36].

#### **Tensile strength**

Tensile strength is the maximum stress applied to a point at which the film specimen breaks. Tensile strength of the optimized batch formulation was evaluated by a digital tensile strength tester. The test was carried out in triplicates and the average value was noted. [35-36]

#### **Water Uptake**

The water uptake was determined by drying the films at 60°C with a current of air, after

which the films were subjected to desiccation over calcium chloride at 40°C for 24 h. These samples were weighed and exposed to 70% relative humidity at room temperature. This relative humidity was achieved using saturated solutions of sodium chloride. After equilibration under this humidity, films were weighed for determining the increase in weight; and percent water uptake was calculated. [35-36]

#### **Determination of piercing load**

The apparatus used for hardness determination was employed with a slight modification. The test was carried out by placing the film between two metal dies with an aperture diameter of 2 mm in both the dies. While the two dies hold the film in position, the increments of weights were added on to the wooden plate. The needle moves down across the film as and when the piercing load value is exceeded. The procedure was carried out on 5 films selected at random and the mean values for piercing load were recorded. [34]

#### **Surface pH**

Film was soaked in 2 ml of distilled water for 15 min. Surface pH of films was determined using pH paper [34].

#### **Scanning Electron Microscopy**

The Scanning Electron Microscopy (SEM) is used to identify the particle size and the surface morphology of the prepared films. The film is placed on the covered glass slide and then dried by applying vacuum, later it was coated with gold to a thickness of 100A using VEGAS TESCAN Vacuum evaporator and the image was captured for the prepared film. The surface topography of the prepared film were observed by optical microscopy using a calibrated eyepiece micrometer, and photographs were taken at  $\times$ 400 magnification with a digital camera (Olympus, 8.1 megapixel, Japan) [37].

#### **Stability Studies of Films**

Stability test was conducted for 30 days at different temperatures: 4, 45 and 60 °C. At

specific intervals of time (Day 5, 10, 15, 20, 25 and 30), films were taken out to assay their drug content, appearance and texture. [37,38].

### Evaluation of Mechanical properties of drug loaded films containing extracted gum

The drug loaded films were evaluated as same for plane film of gum.

### Study of in vitro Drug Release Kinetics

The in vitro diffusion data studies were analyzed for establishing kinetics of drug diffusion. The model fitting was done using an in-house program developed by Zero order (cumulative % drug release vs time), First order (log cumulative % drug remaining vs time), Higuchi (cumulative % drug release vs square root of time) and Peppas (log cumulative % drug release vs log time), were tested. Three different films formulations of three different herbal gum films were processed for the prediction of release profiles. Diclofenac sodium was used as the model drug. All above mentioned formulations were subjected for the mathematical modeling for the prediction of the release profiles. The relevant data on the film formation as well as diffusion of the active agents from the films has been fitted into various equations for the mathematical modeling. This modeling gives an overall idea on the drug release kinetics and possible mechanism of drug release characteristics. The drug release profile obtained from the In vitro release from various formulations was mathematically treated with various models to predict how a delivery system might function and gives valuable insight into its in vivo behavior. All the formulations were subjected to in vitro release studies. The results obtained of in vitro release studies were attempted to fit into various mathematical models available in the software to fit the release studies. In this software various models such as Zero order

kinetics (cumulative percentage amount of drug release versus time), First order kinetics (log cumulative percentage of drug remaining to release versus time), Higuchi (fraction of drug release,  $Mt/M_i$ , versus square root of time) and Peppas (log fraction of drug released,  $\log Mt/M_i$ , versus log time) were applied to assess the kinetics of drug release from prepared films. Most suited model for drug release was predicted on the basis of regression coefficient i.e. nearer the value of regression coefficient towards 1, greater the suitability of best fitted release mechanism [39-41].

## RESULTS AND DISCUSSION

Various natural polymers have been investigated for their application as pharmaceutical adjuvants. Cordia gum is a biopolymer obtained from the plants and the present communication is an investigation of the physicochemical characteristics and film-forming properties of Cordia gum.

### Extraction of gums from plant materials

Three selected plant gums were extracted from the fruits of *Cordia dichotoma* frost. The percent yields of the plant gum was calculated. The calculated percent yield of 7.50 % for the extraction of *Cordia dichotoma* gum (Table 4). The gum is initially white in color but changes to reddish brown to brownish black on exposure to air and temperature as it goes dry. It is sparingly soluble in water but swells in contact with water, giving a highly viscous solution.

**Table 4: Percent yield of gum extractions**

| Plant gums         | <i>Cordia dichotoma</i><br>Gum |
|--------------------|--------------------------------|
| Source plant parts | Fruits                         |
| % Yield            | 7.50 %                         |

### Phytochemical evaluation of the extracted gum

These extracted gum *Cordia dichotoma* gum was characterized for various important phytochemical qualitative tests.

Table 5: Phytochemical qualitative tests on extracted gums

| Sl. No.        | Tests                                       | <i>C. dichotoma</i> gum |
|----------------|---|-------------------------|
| 1              | <b>Tests for Alkaloids:</b>                 |                         |
|                | a) Dragendorff's test                       | - ve                    |
|                | b) Mayer's                                  | - ve                    |
|                | c) Wagner's                                 | - ve                    |
|                | d) Hager's                                  | - ve                    |
| 2              | <b>Tests for Glycosides:</b>                |                         |
|                | a) Keller - Killaine test                   | - ve                    |
|                | b) Balget test                              | - ve                    |
|                | c) Bromine water test                       | - ve                    |
|                | d) Legal test                               | - ve                    |
| 3              | <b>Tests for Carbohydrates:</b>             |                         |
|                | a) Barfoed's test                           | + ve                    |
|                | b) Benedict's test                          | + ve                    |
|                | c) Molisch's test                           | + ve                    |
|                | <b>Tests for Starches:</b>                  |                         |
| a) Iodine test | - ve  |                         |
| 4              | <b>Tests for Flavonoids:</b>                |                         |
|                | a) Shinoda test                             | - ve                    |
|                | b) Alkaline reagent tests                   | - ve                    |
|                | c) Ferric chloride test                     | - ve                    |
|                | d) Lead acetate solution test               | - ve                    |
| 5              | <b>Tests for Triterpenoids and Sterols:</b> |                         |
|                | a) Liebermann – Burchard test               | - ve                    |
|                | b) Salkowaski test                          | - ve                    |
| 7              | <b>Tests for Saponins:</b>                  |                         |
|                | a) Haemolysis test                          | - ve                    |
|                | b) Foam test                                | - ve                    |
| 8              | <b>Tests for Proteins:</b>                  |                         |
|                | a) Xanthoproteic test                       | - ve                    |
|                | b) Ninhydrine test                          | - ve                    |
|                | c) Millon's test                            | - ve                    |
|                | d) Biuret test                              | - ve                    |
| 9              | <b>Tests for Tannins:</b>                   |                         |
|                | a) Gelatin test                             | - ve                    |
|                | b) Ferric chloride test                     | - ve                    |

#### Physical parameters of extracted gums

The extracted plant derived *Cordia dichotoma* gum was characterized for physical parameters like color, odor, taste, pH, Loss on drying (LOD), solubility, swelling index, viscosity, angle of repose,

bulk and tap densities, Hausner's ratio, optical rotation, total and acid soluble ash values. The obtained results of various physical parameters of these three selected extracted gums are presented in Table 6.

Table 6: Physical parameters of extracted gums

| Physical parameters                               | <i>Cordia dichotoma</i> gum            |
|---|--|
| Colour  | Firstly white, with time buff to brown |
| Odour   | Characteristic                         |
| Taste   | Mucilaginous                           |
| pH  | 6.2                                    |
| LOD   | 9.62                                   |
| Melting point                                     | 242-274°C                              |
| <b>Solubility</b><br>In water                     | Soluble                                |
| <b>Solubility</b><br>In organic solvent           | Insoluble                              |
| Swelling index                                    | NMT 5.7                                |
| Viscosity   | 373.6 cps                              |
| Angle of repose                                   | 12°                                    |
| Bulk density                                      | 0.5852 gram/ml                         |
| Tap density                                       | 0.8753 gram/ml                         |
| Hausner's ratio                                   | 1.49                                   |
| Optical rotation (hydrolysed solution of 1 % w/v) | + 1.49                                 |
| Total ash value                                   | 8.3 w/v                                |
| Acid soluble ash values                           | 1.2 % w/v                              |

### Characterization of extracted gums by Fourier Transform-infra-Red (FTIR) spectroscopy analysis

The spectrum of extracted *Cordia dichotoma* gum showed an identical broad band at 3696.54 cm<sup>-1</sup> due to -OH stretching

vibrations, peak at 2981.08 cm<sup>-1</sup> due to C-H stretch, a small peak at 1567.52 cm<sup>-1</sup> due to -C=O stretching, peak at 1454.04 cm<sup>-1</sup> due to -C-H bend and small peaks at 1033.03 and 1011.52 cm<sup>-1</sup> due to secondary -OH stretching (**Fig. 3**).

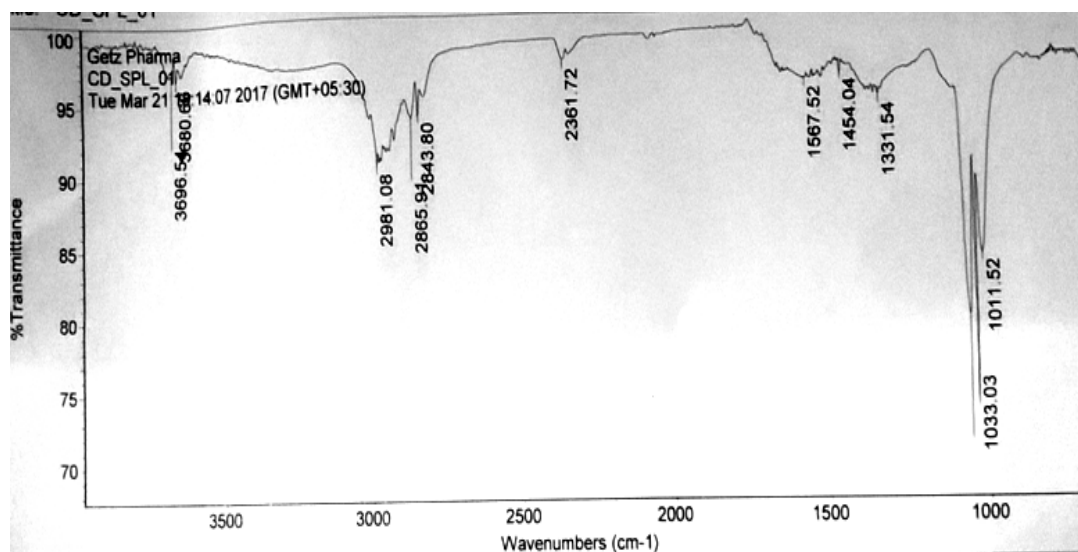


Fig. 1: FTIR spectrum of extracted *Cordia dichotoma* gum

### Film casting evaluations for the extracted gum

The prepared films containing extracted *Cordia dichotoma* gum of 5-30 % w/w were found to have dried appearances; whereas, films containing 30 % w/w of *Cordia*

*dichotoma* gum demonstrated a wet appearance (Table 7). However, films containing *Cordia dichotoma* gum of 15-25 % w/w (CDF3, CDF4, and CDF5) revealed satisfactory appearances and accepted suitable for further evaluation.

**Table 7: Film casting ability of *Cordia dichotoma* gum**

| Ingredients                         | Formulations |       |                |                |                |      |
|-------------------------------------|--------------|-------|----------------|----------------|----------------|------|
|                                     | CDF1         | CDF2  | CDF3           | CDF4           | CDF5           | CDF6 |
| <i>Cordia dichotoma</i> gum (% w/w) | 05           | 10    | 15             | 20             | 25             | 30   |
| Glycerine (%w/v)                    | 2.5          | 2.5   | 2.5            | 2.5            | 2.5            | 2.5  |
| Methyl paraben (%w/v)               | 0.2          | 0.2   | 0.2            | 0.2            | 0.2            | 0.2  |
| Appearance                          | Dried        | Dried | Satisfactory * | Satisfactory * | Satisfactory * | Wet  |

**Note:** Satisfactory\* means films which were suitable for further evaluation

### Selection of the optimized films

The optimized films (drug free) made of *Cordia dichotoma* gum were selected for further evaluations. The drug free films, which showed satisfactory film appearances, were selected as optimized films and were tested fatherly CDF3 (containing extracted *Cordia dichotoma* gum of 15 % w/w) were selected as optimized films for further evaluations.

Evaluation of mechanical properties of drug free films

The optimized films (drug free) containing extracted *Cordia dichotoma* gum was evaluated for their mechanical properties like weight, mean thickness, folding endurance, water uptake, tensile strength, piercing load and surface pH. The weight of CDF3 film was measured as  $211.14 \pm 0.11$  mg/cm<sup>2</sup>. The mean thicknesses of these

optimized film was measured as  $0.412 \pm 0.210$  mm for CDF3. Folding endurance of CDF3 film was determined as  $258 \pm 0.410$ . The water uptake by CDF3 film was measured  $7.54 \pm 0.41$  %. The tensile strength of the film was calculated and found as  $7.58 \pm 0.42$ . The CDF3 films possessed higher tensile strength. CDF3 film was computed as  $0.276 \pm 0.034$  kg. The surface pHs of the film CDF3 was measured and almost neutral pHs was measured as  $6.90 \pm 0.04$ . The almost neutral pH of the drug free film containing extracted plant gum entails slighter chances of gastrointestinal irritation, when these will be applied as pharmaceutical excipients in the formulations for oral administration. The results of mechanical properties of drug free films containing extracted gums are presented in Table 8.

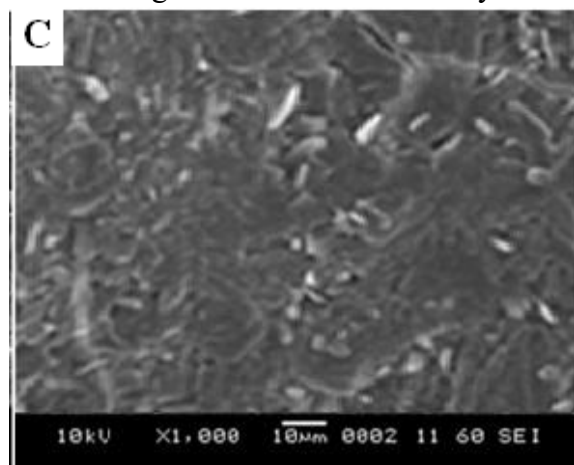
**Table 8: Mechanical properties of drug free films containing extracted gums**

| Films                                   | Weight (mg/cm <sup>2</sup> ) | Mean thickness (mm) | Folding endurance (No. of folds) | Water uptake (%) | Tensile strength (kg/cm <sup>2</sup> ) | Piercing load (kg) | Surface pH     |
|---|------------------------------|---------------------|----------------------------------|------------------|--|--------------------|----------------|
| <b><i>Cordia dichotoma</i> gum film</b> |                              |                     |                                  |                  |  |                    |                |
| <b>CDF3</b>                             | 211.14<br>± 0.11             | 0.412<br>± 0.210    | 258<br>± 0.410                   | 7.54<br>± 0.41   | 7.58<br>± 0.42                         | 0.267<br>± 0.034   | 6.90<br>± 0.04 |

Mean ± S.E.; n = 3

### Scanning electron microscopic (SEM) observation study

The optimized film (drug free) containing extracted *Cordia dichotoma* gum was characterized morphological observation. CDF4 films are presented in Fig. 2. The topographical morphology of CDF3 film containing *Cordia dichotoma* gum indicated smoother surface. Some polymeric derbies were seen on the film, which might be due to the migration of water during drying (Nayak et al., 2012). CDF3 film (containing extracted *Cordia dichotoma* gum) were characterized and presented in Fig. 3. The cross-sectional morphology of *Cordia dichotoma* gum exhibited smother layer.



**Fig. 2** Topographical morphology CDF4 film (containing extracted *Cordia dichotoma* gum) [C] by Scanning Electron Microscope



**SEM cross sectional image of CDF3**

**Fig. 3:** The cross-sectional morphology of CDF3 film (containing extracted *Cordia dichotoma* gum) by Scanning Electron Microscope.

### Stability studies of drug free films

Stability testing was performed to reveal the stability of the optimized film (drug free) containing extracted *Cordia dichotoma* gum (CDF3). The test was conducted for 30 days at different temperatures: 40, 45 and 60°C. At specific intervals of time (Day 5, 10, 15, 20, 25 and 30), appearance and texture profiles of these drug free films was analyzed. The result of the stability study demonstrated absence of any significant changes in the appearances and textures. Therefore, the tested drug free film was found stable enough.

### Identification of model drug for the formulation of solid dosage forms

Diclofenac sodium (a NSAID) is selected as model drug for the formulation of solid dosage forms. The physical nature, colour,

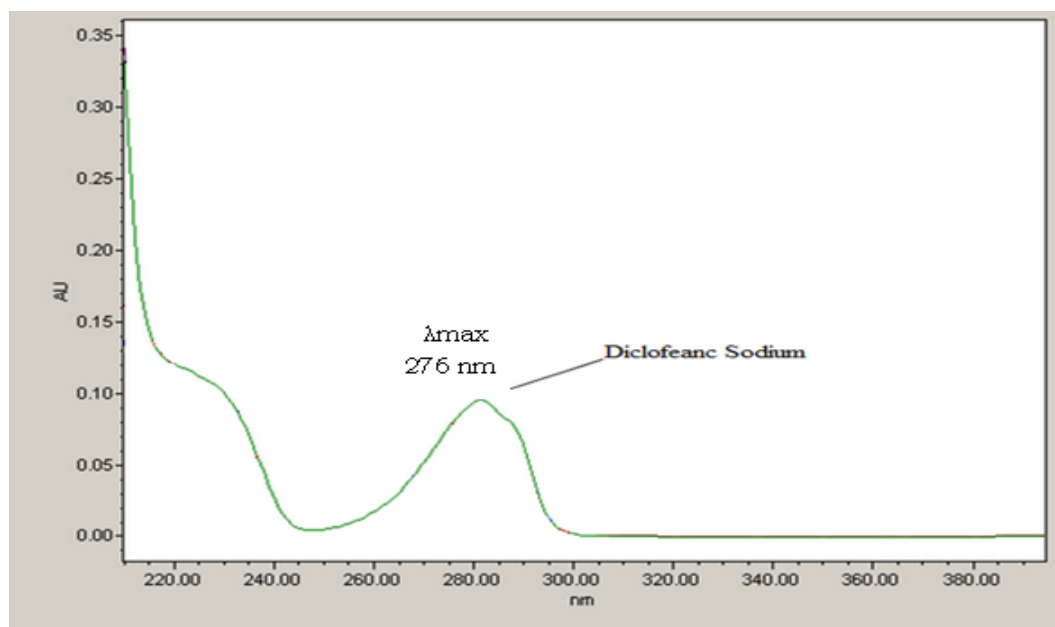
melting point, and solubility of diclofenac sodium were determined and assessed (Table 9). Diclofenac sodium powder was found crystalline and of highly hygroscopic in nature. The colour of it was white to

slightly yellowish. The melting point of diclofenac sodium was measured as  $280 \pm 0.5^\circ\text{C}$ . Diclofenac sodium was found soluble in ethanol and methanol. However, it was found sparingly soluble in water.

**Table 9: Physical description of diclofenac sodium**

| Parameters    | Descriptions  |
|---------------|---|
| Nature        | Crystalline powder; slightly hygroscopic                    |
| Colour        | White to slightly yellowish                                 |
| Melting point | $280 \pm 0.5^\circ\text{C}$ .                               |
| Solubility    | Soluble in ethanol and methanol, sparingly soluble in water |

Diclofenac sodium was scanned for UV absorption with phosphate buffer pH 7.4 using a UV-VIS spectrophotometer and  $\lambda_{\text{max}}$  value was determined. The  $\lambda_{\text{max}}$  value of diclofenac sodium in phosphate buffer pH 7.4 was found 276 nm (Fig. 4).



**Fig. 4: Identification of diclofenac sodium by UV absorption**

Diclofenac sodium was also identified by Fourier Transform-Infra Red (FTIR) spectroscopy analysis. The FTIR spectrum of diclofenac sodium is presented in Fig. 5. The FTIR spectrum of diclofenac sodium showed that the principal peaks at  $1221.56$  and  $1318.68 \text{ cm}^{-1}$  resulted from C-N stretching; whereas at  $1517.56 \text{ cm}^{-1}$  and

$1603.34 \text{ cm}^{-1}$  resulted from C=C stretching and C=O stretching of carboxyl group, respectively. The results of FTIR spectroscopy analyses were matched with the results of some previous studies (Nayak and Pal, 2011; Nayak et al., 2013; Sinha et al., 2015) and suggested that the tested sample can be diclofenac sodium.

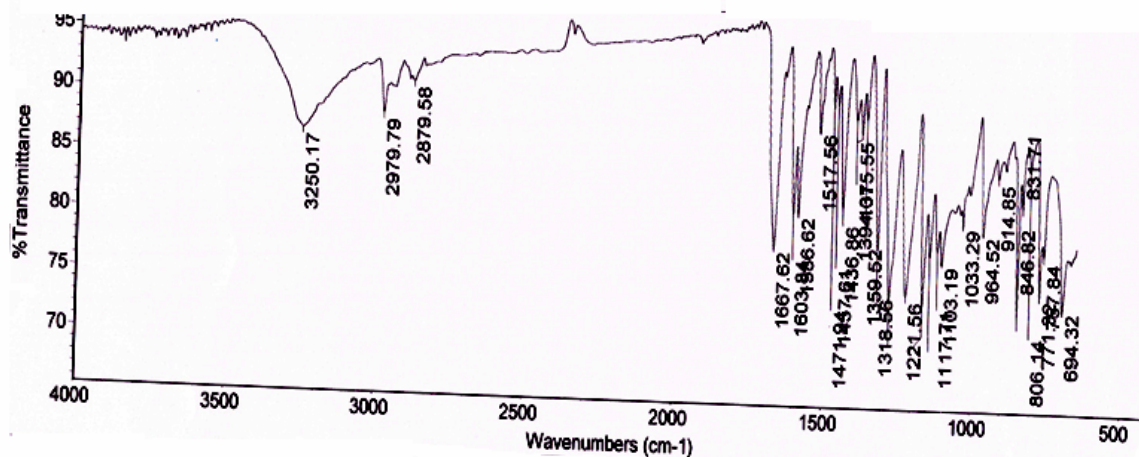


Fig. 5: FTIR spectrum of diclofenac sodium

#### Calibration curve of diclofenac sodium

Solutions of diclofenac sodium ranging from 2 to 10  $\mu\text{g/ml}$  were prepared in phosphate buffer, pH 7.4. Absorbance was measured for each solution at  $\lambda_{\text{max}}$  of 276 nm, using UV-VIS spectrophotometer (Shimadzu,

Japan). Correlation coefficient was found to be 0.9973 in phosphate buffer, pH 7.4. The equation obtained is:  $Y = 0.0023 + 0.0021 X$ . The Standard calibration curve of diclofenac sodium is presented in Fig. 6.

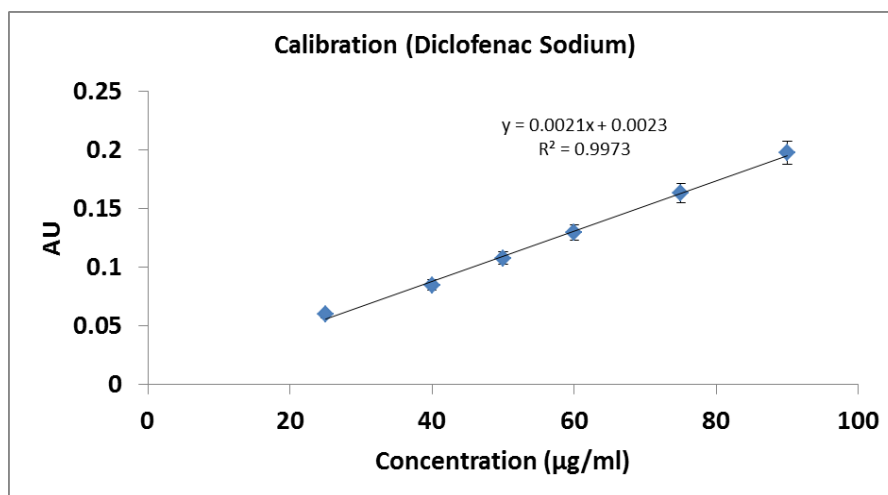


Fig. 6: Standard curve of diclofenac sodium in phosphate buffer, pH 7.4

#### Preparation and evaluation of drug (diclofenac sodium) loaded films containing extracted gums

##### Drug loaded films containing extracted *Cordia dichotoma* gum

The drug loaded films containing extracted *Cordia dichotoma* gum prepared using glycerin of 0.05 and 0.10 % w/v were found to have dried appearances; whereas, the drug

loaded films prepared using glycerin of 0.20 and 0.25 % w/v demonstrated a wet appearance (Table 10). However, the drug loaded films containing containing *Cordia dichotoma* gum prepared using 0.15 % w/v glycerin. (CDF3) revealed satisfactory appearances and accepted suitable for further evaluation.

**Table 10: Composition of drug loaded films containing extracted *Cordia dichotoma* gum**  
**Note:** Satisfactory\* means films which were suitable for further evaluation

| Composition of film /film code | CDF1  | CDF2  | CDF3           | CDF4 | CDF5 |
|--------------------------------|-------|-------|----------------|------|------|
| Gum (10 % w/w)                 | 5 ml  | 5 ml  | 5 ml           | 5 ml | 5 ml |
| Glycerine (% w/v)              | 0.05  | 0.10  | 0.15           | 0.20 | 0.25 |
| Methyl paraben (% w/v)         | 0.2   | 0.2   | 0.2            | 0.2  | 0.2  |
| Diclofenac sodium (% w/w)      | 0.5   | 0.5   | 0.5            | 0.5  | 0.5  |
| Appearance                     | Dried | Dried | Satisfactory * | Wet  | Wet  |

### Evaluation of mechanical properties of drug loaded films

The optimized drug loaded film containing extracted *Cordia dichotoma* gum was evaluated for the mechanical properties like weight, mean thickness, folding endurance, water uptake, tensile strength, piercing load, surface pH and drug content uniformity. The weight of

These drug loaded film of area  $211.14 \pm 0.11$  mg/cm<sup>2</sup> for CDF3. The mean thicknesses of CDF3 films (drug loaded) were measured as  $0.412 \pm 0.210$  mm. Folding endurance of CDF3 drug loaded films was measured as  $258 \pm 0.410$ . The water uptake by CDF3 films loaded with

diclofenac sodium was measured  $7.54 \pm 0.41$  %. The tensile strength was calculated as  $7.58 \pm 0.42$  for CDF3 film. The piercing load of CDF3 film loaded with diclofenac sodium was computed as  $0.276 \pm 0.034$  kg. The surface pHs of CDF3 film was measured as  $6.90 \pm 0.04$ . The surface pHs of the film was measured and almost neutral pH was observed. The almost neutral pH of the drug free films containing extracted plant gum entails slighter chances of gastrointestinal irritation, when these will be applied as pharmaceutical excipients in the formulations for oral administration. The results of mechanical properties of film containing extracted *Cordia dichotoma* gum are presented in **Table 11**.

**Table 11: Mechanical properties of drug loaded films containing extracted gums**

| Weight (mg/cm <sup>2</sup> ) | Mean thickness (mm) | Folding endurance (No. of folds) | Water uptake (%) | Tensile strength (kg/cm <sup>2</sup> ) | Piercing load (kg) | Surface pH      | Content uniformity (mg/cm <sup>2</sup> ) |
|------------------------------|---------------------|----------------------------------|------------------|--|--------------------|-----------------|--|
| $211.14 \pm 0.11$            | $0.412 \pm 0.210$   | $258 \pm 0.410$                  | $7.54 \pm 0.41$  | $7.58 \pm 0.42$                        | $0.267 \pm 0.034$  | $6.90 \pm 0.04$ | $4.93 \pm 0.74$                          |

Mean  $\pm$  S.E.; n = 3

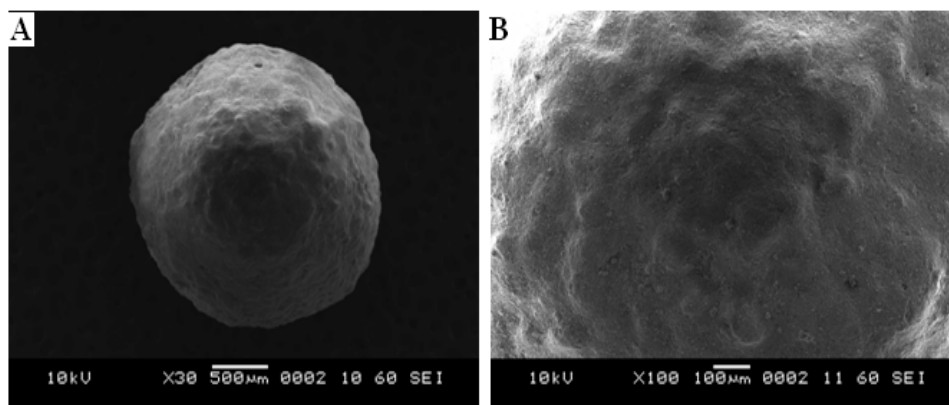
### Preparation and evaluation of pellets and gum coated pellets containing diclofenac sodium

Preparation of pellets

By layering the drug (diclofenac sodium) on non-pareil seeds (nps) of 1.3 mm average size, the drug coated non-pareil seeds (NPS) were prepared.

### Scanning electron microscopic (SEM) observation study

The morphology of diclofenac sodium coated pellets *Cordia dichotoma* gum coated pellets were characterized by SEM analyses. The SEM photographs of diclofenac sodium coated pellets are presented in **Fig. 7**. The diclofenac sodium coated pellets were of spherical shaped as seen in the SEM photograph (**Fig. 7A**). The surface topographical morphology of the diclofenac sodium coated pellets showed an almost smooth surface (**Fig. 7B**).

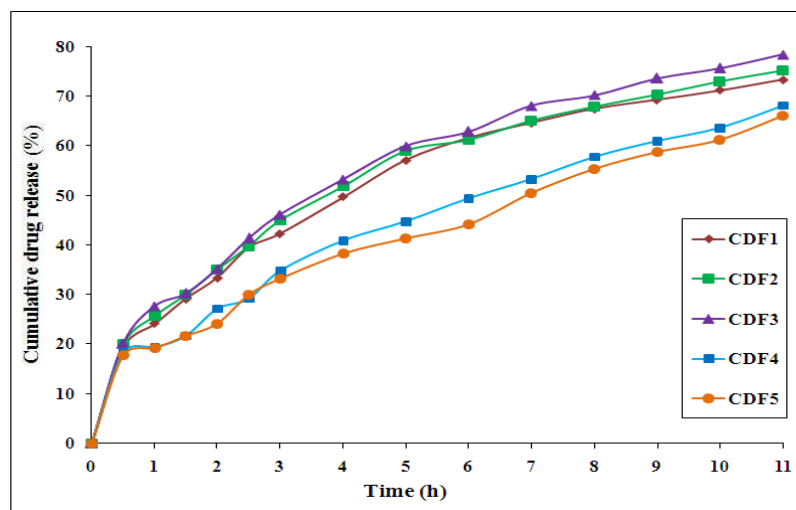


**Fig. 7:** SEM photographs of diclofenac sodium coated pellets at different magnifications: (A) x 30 and (B) x 100

### ***In vitro* drug releases from drug (diclofenac sodium) loaded films containing extracted gums**

*In vitro* drug releases from drug (diclofenac sodium) loaded pellets containing extracted *Cordia dichotoma* gum in the phosphate buffer saline, pH 6.8 was evaluated. The diclofenac sodium loaded pellets exhibited sustained drug releasing over a period of 11

hours of dissolution in phosphate buffer saline, pH 6.8 shown in fig 8. The drug releasing from diclofenac sodium loaded pellets containing extracted *Cordia dichotoma* gum was found sustained. This phenomenon might be due to the higher viscosity of the extracted *Cordia dichotoma* gum.



**Fig. 8:** *In vitro* drug release from diclofenac sodium loaded films containing extracted *Cordia dichotoma* gum

*In vitro* drug releasing data was evaluated kinetically by testing fitting with various mathematical models zero-order model, first-order model, Higuchi model and Korsmeyer-Peppas model. The results of curve-fitting into above mentioned

mathematical models are presented in **Table 12** for diclofenac sodium loaded pellets containing extracted *Cordia dichotoma* gum. When respective correlation coefficients ( $R^2$ ) were compared, it was found to follow Korsmeyer–Peppas model dominantly with

a correlation coefficient closer to 1 for the drug loaded pellets made of the extracted gum. The determined values of release exponent (n) of these prepared films containing diclofenac sodium were calculated as below 0.5 which indicate that

the drug releasing followed the Fickian (non-steady) diffusion mechanism (when  $n \leq 0.5$ ). *Fickian diffusion* refers to the solute transport process in which the polymer relaxation time is much greater than the characteristic solvent *diffusion* time.

**Table 12: Curve-fitting results of *in vitro* drug release from diclofenac sodium loaded films containing extracted *Cordia dichotoma* gum**

| Code | Correlation coefficient (R <sup>2</sup> ) |                   |               |                        | Release exponent (n) |
|------|---|-------------------|---------------|------------------------|----------------------|
|      | Zero-order model                          | First-order model | Higuchi model | Korsmeyer-Peppas model |                      |
| CDF1 | 0.9288                                    | 0.8395            | 0.9744        | 0.9903                 | 0.46                 |
| CDF2 | 0.9306                                    | 0.8375            | 0.9692        | 0.9918                 | 0.45                 |
| CDF3 | 0.9373                                    | 0.8434            | 0.9761        | 0.9921                 | 0.46                 |
| CDF4 | 0.9794                                    | 0.9124            | 0.9701        | 0.9978                 | 0.47                 |
| CDF5 | 0.9775                                    | 0.9295            | 0.9759        | 0.9855                 | 0.47                 |

### Conclusion

In this study an effective film forming capacity of gum extracted from fruits of *Cordia dichotoma* frost on solid dosage form using Diclofenac sodium as a model drug was evaluated. Hence conclude that gum of *Cordia dichotoma* frost may be potent excipient from natural origin over the existing one.

### References

- Rowe R.C., Shelkey P. J., Walker P. J., In; "Handbook of pharmaceutical excipients" 4 th Edn, Pharmaceutical press U.K. and American pharmaceutical association, U.S.A., 2003, Page 178-184.
- Nagarsenker M.S., In; "Parenteral microemulsions: An overview" International Journal of Pharmaceutics, Volume 355, Issues 1-2, 1 May 2008, Pages 19-30.
- Changquan Sun, David J.W Grant., In; "Effects of initial particle size on the tableting properties of l-lysine monohydrochloride dihydrate powder" International Journal of Pharmaceutics Volume 215, Issues 1-2, 14 March 2001, Pages 221-228.
- Randal Shogren, In; "Water vapor permeability of biodegradable polymers" Journal of environmental polymer degradation, 1997, 5, pages 91-95.
- Omar L Sprockel, Mahua Sen, Padmaja Shivanand, Waruwan Prapaitrakul, In; "A melt-extrusion process for manufacturing matrix drug delivery systems", International Journal of Pharmaceutics Volume 155, Issue 2, 26 September 1997, Pages 191-199.
- R.Deveswaran, Bharath S., Furtado S., Basavaraj B.V., Sindhu Abraham, Madhavan V. In; Studies on the Disintegrant properties of Mucilage and Seed Powder of Plantago ovata, International Journal of ChemTech Research, July-Sept 2009, Vol.1, No.3, Page 621-626.
- Harshal Ashok Pawar , Pravin Jadhav In; Isolation, characterization and investigation of Cordia dichotoma fruit polysaccharide as a herbal excipient, International Journal of Biological Macromolecules, January 2015, Volume 72, Pages 1228-1236.
- Nayak AK, Pal D, Malakar J. In; Development, optimization and evaluation of emulsion-gelled floating beads using natural polysaccharide-blend for controlled

- drug release. *Polym. Eng. Sci.* 2013; 53: Page 338-350.
9. Nayak AK, Das B, Maji R. In; Calcium alginate/gum Arabic beads containing glibenclamide: Development and in vitro characterization. *Int. J. Biol. Macromol.* 2012; 51: Page 1070-1078.
  10. Nayak AK, Pal D. In; Development of pH-sensitive tamarind seed polysaccharide-alginate composite beads for controlled diclofenac sodium delivery using response surface methodology. *Int. J. Biol. Macromol.* 2011; 49: Page 784-793.
  11. Kokate CK, Purohit AP, Gokhale SB. In; Text Book of Pharmacognosy. 38 th edition, NiraliPrakashan, Pune, India, 2000, Page 7135-445.
  12. Khandelwal KR (2002). In; Pharmacognosy, Techniques, and Experiments. 9 th edition, Nirali Prakashan, Pune. India. 2002, Page 149-156.
  13. Bruneton, J., 1999. In; Pharmacognosy phytochemistry medicinal plants. 2nd Edn, Lavoisier publishing, Page 90.
  14. Jarald, E. E., Jarald, S. E., 2007. In; Text book of Pharmacognosy and Phytochemistry. 1st Edn, CBS Publication, New Delhi, Page 177-178.
  15. Lachman, L., Liberman, H. A., Kanig, J. L. 1981. In; The Theory and Practice of Industrial Pharmacy., 3rd Edn, varghese publishing house Mumbai Page 359.
  16. Nadkarni, K. M., 2002. In; Indian Materia Medica. 3rd Edn, Bombay Popular Publication, Mumbai, Page 736-738.
  17. Sundaram, J., Durance, T. D. 2008. In; Water sorption and physical properties of locust bean gum-pectin-starch composite gel dried using different drying methods. *Food Hydrocolloids*, 22, Page 1352-1361.
  18. Harnby N., Hawkins A.E., Vandame D., In; The use of bulk density determination as a means of typifying the flow characteristics of loosely compacted powders under conditions of variable relative humidity, *Chemical Engineering Science*, Volume 42, Issue 4, 1987, Pages 879-888.
  19. Indian Pharmacopoeia, The controller of Publication, Delhi. 2014, Vol. 1 Page 224.
  20. Indian Pharmacopoeia, The controller of Publication, Delhi. 2014, Vol. 1 Page 226.
  21. Bagnold RA (1966), In; The shearing and dilatation of dry sand and the 'singing' mechanism., *Proc R Soc Lond A., Math Phys Sci.* 295(1442): Page 219-232.
  22. Indian Pharmacopoeia, The controller of Publication, Delhi. 2014, Vol. 1 Page 227.
  23. Khandelwal, K. R., 2003. In; Practical Pharmacognosy. 10th edn, Nirali Prakashan, Pune, Page 162-172.
  24. Indian Pharmacopoeia, The controller of Publication, Delhi. 2014, Vol. 1 Page 162.
  25. Pujari, S. G., 1981. In; Study of Some Natural Gums. UDCT, Mumbai, India.
  26. Indian Pharmacopoeia, The controller of Publication, Delhi. 2014, Vol. 1 Page 174.
  27. Indian Pharmacopoeia, The controller of Publication, Delhi. 2014, Vol. 1 Page 169.
  28. Indian Pharmacopoeia, The controller of Publication, Delhi. 2014, Vol. 1 Page 203.
  29. Khandelwal, K. R., 2010. In; Practical Pharmacognosy. 20th edn, Nirali Prakashan, Pune, Page 23.11.
  30. Khandelwal, K. R., 2010. In; Practical Pharmacognosy. 20th edn, Nirali Prakashan, Pune, Page 23.8 -23.10.
  31. Jindal M., Vineet Kumar, Rana V., Tiwary A.K., In; Exploring potential new gum source *Aegle marmelos* for food and pharmaceuticals: Physical, chemical and functional performance, *Industrial Crops and Products*, Volume 45, February 2013, Pages 312-318.

32. Lachman, L., Liberman, H. A., Kanig, J. L. 1981. In;The Theory and Practice of Industrial Pharmacy., 3rd Edn, varghese publishing house Mumbai Page 368.
33. Lachman, L., Liberman, H. A., Kanig, J. L. 1981. In;The Theory and Practice of Industrial Pharmacy., 3rd Edn, varghese publishing house Mumbai Page 387.
34. Jindal M., Vineet Kumar, Rana V., Tiwary A.K., In; Exploring potential new gum source *Aegle marmelos* for food and pharmaceuticals: Physical, chemical and functional performance, Industrial Crops and Products, Volume 45, February 2013, Pages 312-318.
35. Mundada A., Satturwar P., Fulzele S., Joshi S., Dorle A., In; Characterization and Evaluation of Novel Film Forming Polymer for Drug Delivery, Iran J Pharm Res. 2011 Winter; 10(1): Page 35–42.
36. Zhang, Z., Fang, S. 2000. In; Novel network polymer electrolytes based on polysiloxane with internal plasticizer. *Electrochimica Acta*, 45, Page 2131–2138.
37. Kalu V. D., Odeniyi M. A., Jaiyeoba K. T., In; Matrix properties of a new plant gum in controlled drug delivery, *Archives of Pharmacal Research*, 2007, 30, pages 884–889.
38. Sinha P., Ubaidulla U., Nayak A. K., In; Okra (*Hibiscus esculentus*) gum-alginate blend mucoadhesive beads for controlled glibenclamide release, *International Journal of Biological Macromolecules*, Volume 72, January 2015, Pages 1069-1075.
39. Nayak A. K., Pal D, Malakar J. In; Development, optimization and evaluation of emulsion-gelled floating beads using natural polysaccharide-blend for controlled drug release. *Polym. Eng. Sci.* 2013; 53: Page 338-350.
40. Nayak A. K., Pal D., In; Development of pH-sensitive tamarind seed polysaccharide-alginate composite beads for controlled diclofenac sodium delivery using response surface methodology. *Int. J. Biol. Macromol.* 2011; 49: Page 784-793.
41. Sinha P, Ubaidulla U, Nayak A. K., In; Okra (*Hibiscus esculentus*) gum-alginate blend mucoadhesive beads for controlled glibenclamide release. *Int. J. Biol. Macromol.* 2015; 72: Page 1069-1075.